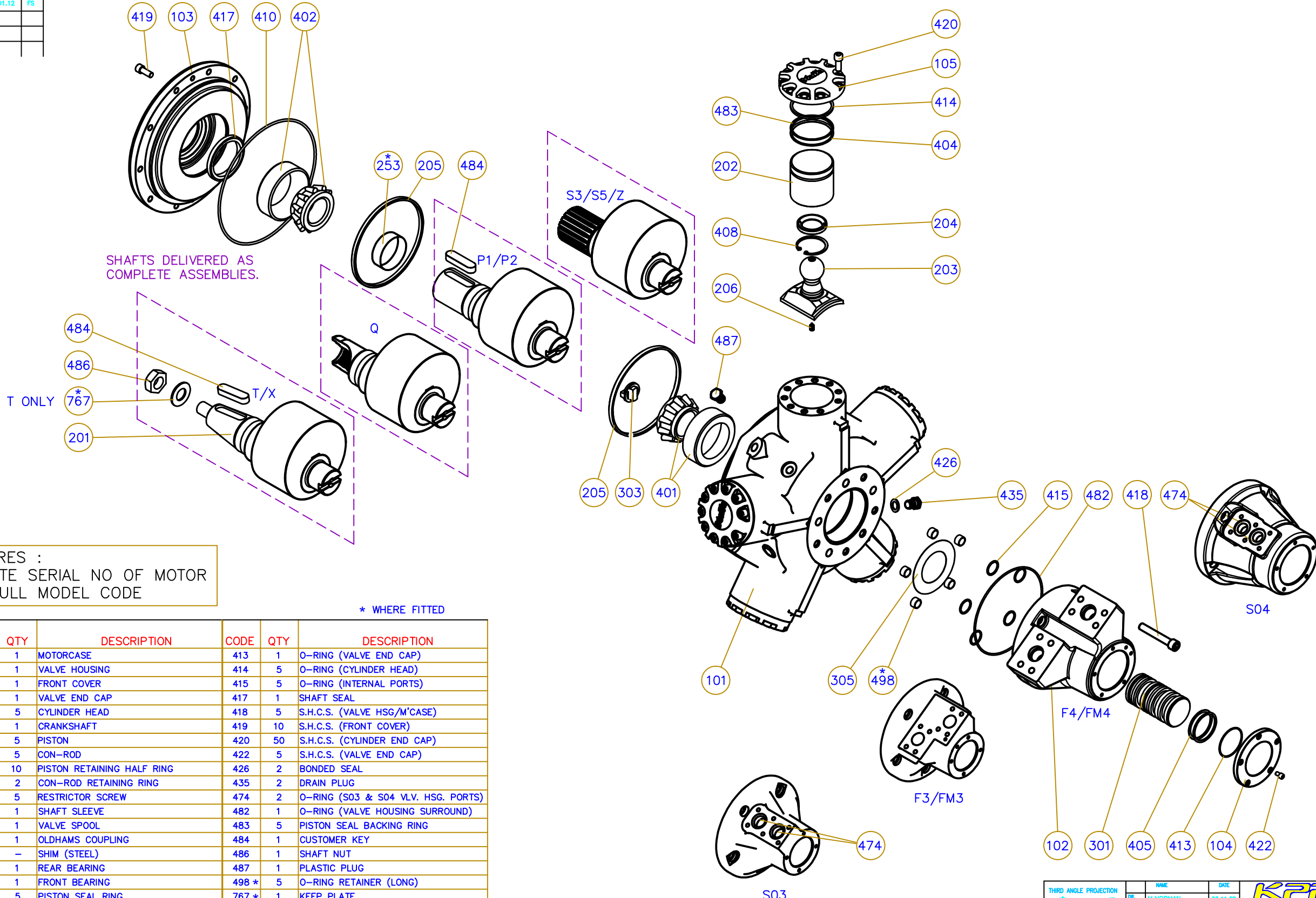


DRAWING No.			
016451			
ISSUE	CHANGE	DATE	CHK.
A		11.08	F.S
B		01.12	FS

DO NOT SCALE

IF IN DOUBT-ASK



SHAFTS DELIVERED AS COMPLETE ASSEMBLIES.

T ONLY

SPARES :
QUOTE SERIAL NO OF MOTOR
+ FULL MODEL CODE

* WHERE FITTED

CODE	QTY	DESCRIPTION	CODE	QTY	DESCRIPTION
101	1	MOTORCASE	413	1	O-RING (VALVE END CAP)
102	1	VALVE HOUSING	414	5	O-RING (CYLINDER HEAD)
103	1	FRONT COVER	415	5	O-RING (INTERNAL PORTS)
104	1	VALVE END CAP	417	1	SHAFT SEAL
105	5	CYLINDER HEAD	418	5	S.H.C.S. (VALVE HSG/M'CASE)
201	1	CRANKSHAFT	419	10	S.H.C.S. (FRONT COVER)
202	5	PISTON	420	50	S.H.C.S. (CYLINDER END CAP)
203	5	CON-ROD	422	5	S.H.C.S. (VALVE END CAP)
204	10	PISTON RETAINING HALF RING	426	2	BONDED SEAL
205	2	CON-ROD RETAINING RING	435	2	DRAIN PLUG
206	5	RESTRICTOR SCREW	474	2	O-RING (S03 & S04 VLV. HSG. PORTS)
253 *	1	SHAFT SLEEVE	482	1	O-RING (VALVE HOUSING SURROUND)
301	1	VALVE SPOOL	483	5	PISTON SEAL BACKING RING
303	1	OLDHAMS COUPLING	484	1	CUSTOMER KEY
305	-	SHIM (STEEL)	486	1	SHAFT NUT
401	1	REAR BEARING	487	1	PLASTIC PLUG
402	1	FRONT BEARING	498 *	5	O-RING RETAINER (LONG)
404	5	PISTON SEAL RING	767 *	1	KEEP PLATE
405	12	VALVE SEAL RING			
408	5	CIRCLIP (PISTON-INTERNAL)			
410	1	O-RING (FRONT COVER)			

THIRD ANGLE PROJECTION	NAME	DATE	 <small>Ernesettle, Plymouth PL5 2SA www.kpm-eu.com</small>
	DR. M.NORMAN	03.11.08	
	CHK. F.STANTON	04.11.08	
	ENGR. APPL. F.STANTON	04.11.08	
TITLE GENERAL ASSEMBLY (FOR SPARES) HMB MOTOR (080-200)			SIZE A1 SCALE NTS DRAWING No. 016451 SHEET 1 of 1